

Incoming FAQs

1. How do I apply to study at EETAC/ESAB as an Erasmus / Exchange student?

To apply, you have to enter the online application platform and fulfill the requested information. Please note that we will ask you for:

- The student application form.
- The learning agreement.
- A copy of your Transcript of Records from your home university.
- A copy of your passport or Identity Card, before your arrival.

2. If I don't have all the documents, is it a problem?

Yes. If there's any information missing, we won't process your application until we receive all the documents.

3. I have already been accepted. Do I need to complete the forms?

Once you have been accepted, it is very important that all students complete the application process in order to be registered in the University's Database. You can't come to EETAC/ESAB until you have completed the full application process and have received the acceptance letter.

4. I'm not an EU/EEA citizen. Can I apply?

It depends on whether our School/University and yours have signed a bilateral agreement to allow you make this exchange.

5. When are the deadlines for applications?

Check

<https://cbl.upc.edu/ca/els-serveis/cataleg-de-serveis/informacio-i-tramits-academics/mobilitat-destudiants/incoming-students>

6. What is the academic calendar?

You can find the academic calendar in the link below.

<https://eetac.upc.edu/ca/els-estudis/informacio-academica>

If the link does not work, please search online for "EETAC Calendari Academic"

7. Will the EETAC/ESAB provide accommodation? How can I get it?

You will be able to apply for accommodation if you come within the normal semester dates. Please, make sure that your booking has been done before coming. You will be responsible of finding your own accommodation. For the closest available option, you can contact the Residence in the link below:

<http://www.resa.es/es/residencias/castelldefels/residencia-universitaria-pius-font-i-quer/residencia>

8. Is there any program to learn Spanish/Catalan?

Yes. You can check all this information in following website:

<https://www.upc.edu/slt/en>

https://www.upc.edu/slt/en/learn-es/learn-spanish?set_language=en

https://www.upc.edu/slt/en/learn-catalan/learn-catalan?set_language=en

9. About the European Health Insurance Card...

For all the incoming European students we remind you to bring the European Health Insurance Card. This is necessary to access the public system.

(<http://ec.europa.eu/social/main.jsp?catId=559>).

10. Which subjects can I choose?

You can choose subjects from any course and degree if your home university accepts it. Be careful because if you choose subjects from different degrees and courses you may have problems with the timetable and maybe some subjects will overlap. We advise you to check the schedules available on the website and choose the groups that fit best, before the enrollment.

11. Are the subjects different for the spring and autumn semester?

EETAC:

Usually all subjects are taught in both semesters but they might not always be available in English, therefore it is necessary that you check your schedule when you have decided your learning agreement.

http://eetac.upc.edu/en/educational_model

Before your enrolment, when the new calendar comes out, you can simulate your own schedule and let us know what is the best option for you.

ESAB:

The subjects to be taken in Q1, Q3, Q5 and Q7 correspond to the Winter Semester (From September to January) and the ones taught in Q2, Q4, Q6 and Q8 are for the Spring Semester (From February to June).

12. Which is the language that teachers use?

Most of the subjects are taught in Catalan or Spanish, however, there are a lot of subject done in English too. You can see the teaching in this link.

<http://eetac.upc.edu/en/bachelor>

<http://eetac.upc.edu/en/master>

And

1. [Bachelor's degree in Aerospace Systems Engineering · EETAC](#)
2. [Bachelor's degree in Telecommunications Systems · EETAC](#)
3. [Bachelor's degree in Telematics Engineering · EETAC](#)
4. [Bachelor's degree in Agricultural Engineering · ESAB](#)
5. [Bachelor's degree in Agricultural Environmental and Landscape Engineering · ESAB](#)
6. [Bachelor's degree in Biosystems Engineering · ESAB](#)
7. [Bachelor's degree in Food Engineering · ESAB](#)

13. How can I get from Barcelona to EETAC/ESAB?

You can arrive by train with the line R2, by bus with the L95 line or by car.

More information can be found in the link below:

http://eetac.upc.edu/en/how_to_reach_eetac

14. When do I have to do the enrollment?

You will do the enrollment once you have arrived to EETAC/ESAB. To do it with enough time, we suggest you to come a few days before the lessons start.

15. How can I contact the teachers?

You can contact your teachers once you have made your enrollment. The email addresses are available on the "Atenea" website.

Also here (https://mitra.upc.es/SIA/INFOWEB_DIRECTORI.TAULA) you can find some email addresses.

16. Can I make changes on the learning agreement once the lessons have started?

You can make changes to the learning agreement if your home university accepts it. If not, you cannot do them.

17. How can I find credentials to enter in UPC courses?

When you enroll, you can check information about your credentials in the links below. Even then you should be aware that you will receive an email to your account – this is the one that you have introduced when you registered on the incoming website.

<http://upcnet.upc.edu/connect>

<http://upcnet.upc.edu/connect/upc-credentials>

<https://atenea.upc.edu/moodle/login/index.php>

https://gauss.upc.edu/gauss/canvicontrasenya/operativaContrasenyaUPC?language=en_US

<http://upcnet.upc.edu/need-help/need-help>

18. When will I have my student card?

You will receive your student card shortly after enroll you and after you have uploaded the personal photo in the ATENEA system. It would take up to 2 or 3 weeks. It is very important that your postal address in Barcelona / Catalonia is included in the system. If you haven't done this, you will probably receive it in your home country. Here ([l'arxiu no sé com ho puc afegir](#)) you can find instructions to upload your photo.

19. What if I lose my personal documentation during my stay (passport/ID card etc.)

In case you have been personal documents have been stolen or you have lost your personal documentation, you can check this information here:

<http://www.upc.edu/sri/en/students/international-students/about-your-legal-status-in-spain/what-to-do-if-your-documents-are-lost-or-stolen>

International Students Office (ISO)

Campus Nord, Building BIB (Library)

C. Jordi Girona, 1-3

08034 Barcelona

Tel. 93 401 69 37 Ask for Eulalia Miñarro

Fax 93 401 74 02

E-mail: oficina.mobilitat.internacional@upc.edu

20. Where can I find information about professors and courses?

You can consult the information on the School's website. Usually, each course has information about the professor and details about his/her office and timetable to contact them. For example in English courses (UPC website):



Last update: 14-07-2014

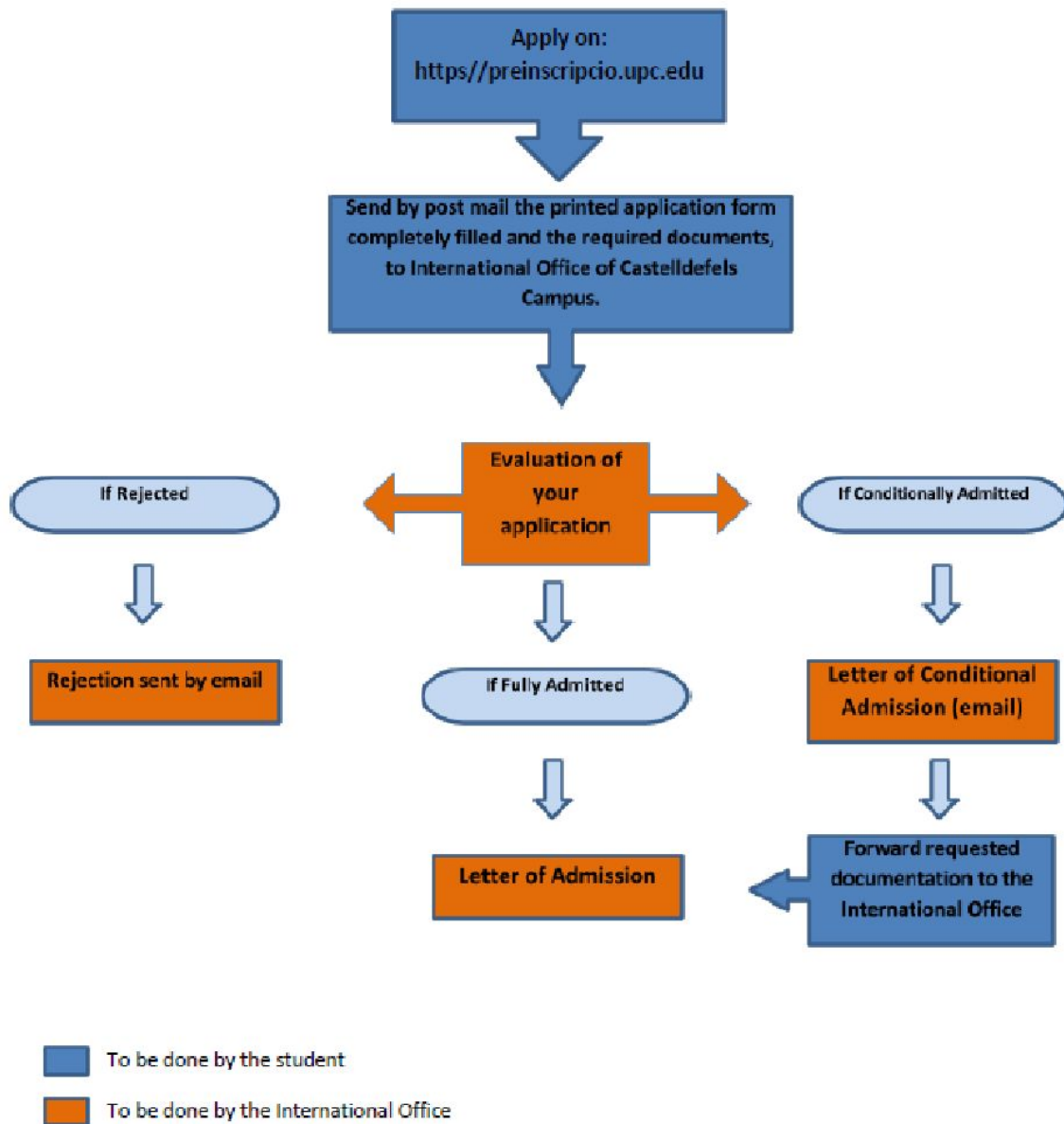
390104 - FM1 - Mathematics I

Coordinating unit: 390 - ESAB - Barcelona School of Agricultural Engineering
Teaching unit: 727 - MA III - Department of Applied Mathematics III
Academic year: 2014
Degree: DEGREE IN AGRICULTURAL ENGINEERING (Syllabus 2009), (Teaching unit Compulsory)
DEGREE IN BIOSYSTEMS ENGINEERING (Syllabus 2009), (Teaching unit Compulsory)
DEGREE IN AGRICULTURAL, ENVIRONMENTAL AND LANDSCAPE ENGINEERING (Syllabus 2009),
(Teaching unit Compulsory)
DEGREE IN FOOD ENGINEERING (Syllabus 2009), (Teaching unit Compulsory)
ECTS credits: 6 **Teaching languages:** Catalan

Teaching staff

Coordinator: IGNACIO MANUEL PELAYO MELERO
Others: JAIME FABREGAT FILLET - IGNACIO MANUEL PELAYO MELERO

Also you can check details about professor's' office place, email and phone number in the School's directory.



21. Can you give me the summary of the process of my enrolment?